



Welcome

San Mateo County Midcoast and Half Moon Bay
Comprehensive Transportation Management Plan

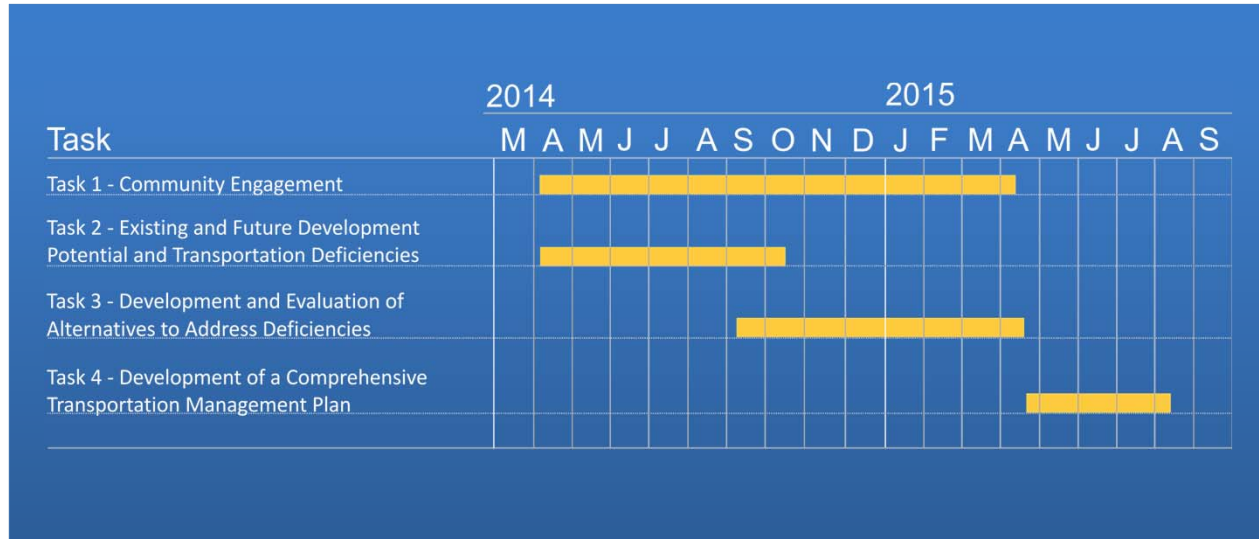
Community Workshop #1
Opportunities and Constraints

*Thank you for attending. We appreciate you
taking the time to be a part of the process. Your
input is important to us.*





Project Schedule



Workshops

- Workshop #1: Opportunities and Constraints, November 2014
- Workshop #2: Alternatives, March 2015
- Workshop #3: Draft Plan, May 2015

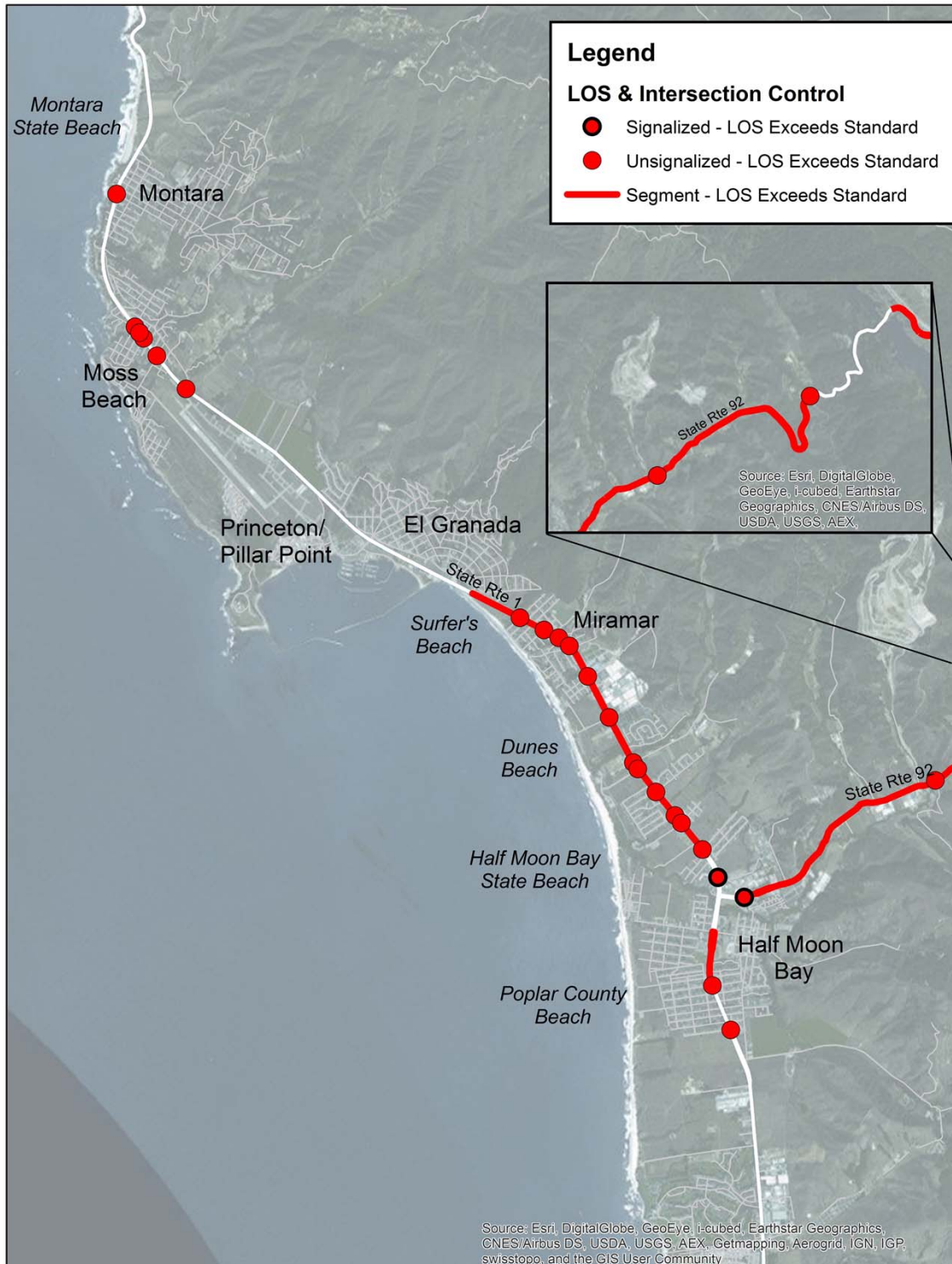


Project Objectives

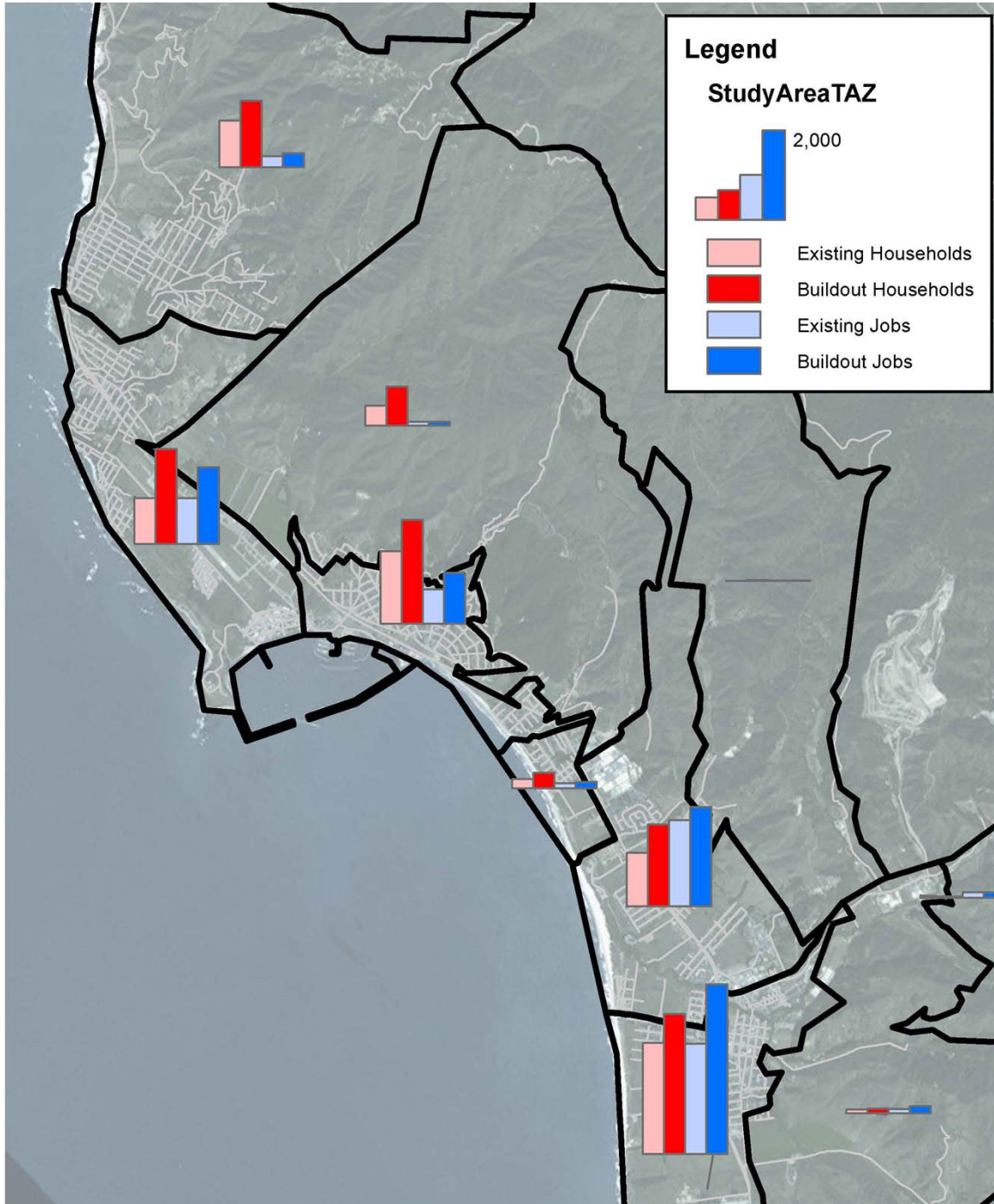
- Estimate the buildout development potential of the Midcoast
- Identify the potential impacts of growth on traffic, mobility and safety
- Identify and evaluate measures to minimize and mitigate the impacts of growth
- Develop a plan for funding and implementing multi-modal transportation improvements



Existing Traffic Deficiencies

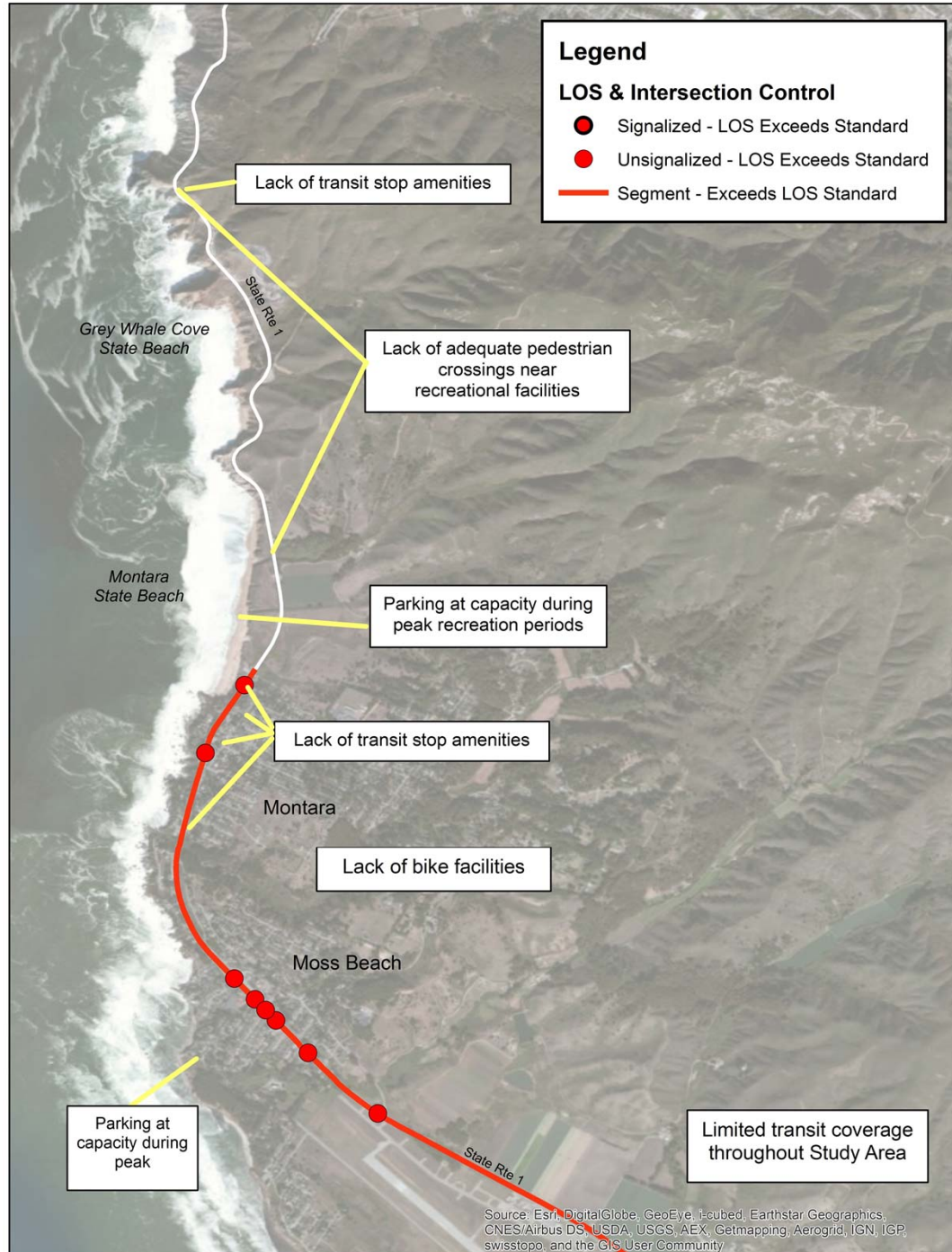


Potential Buildout Growth - 2040

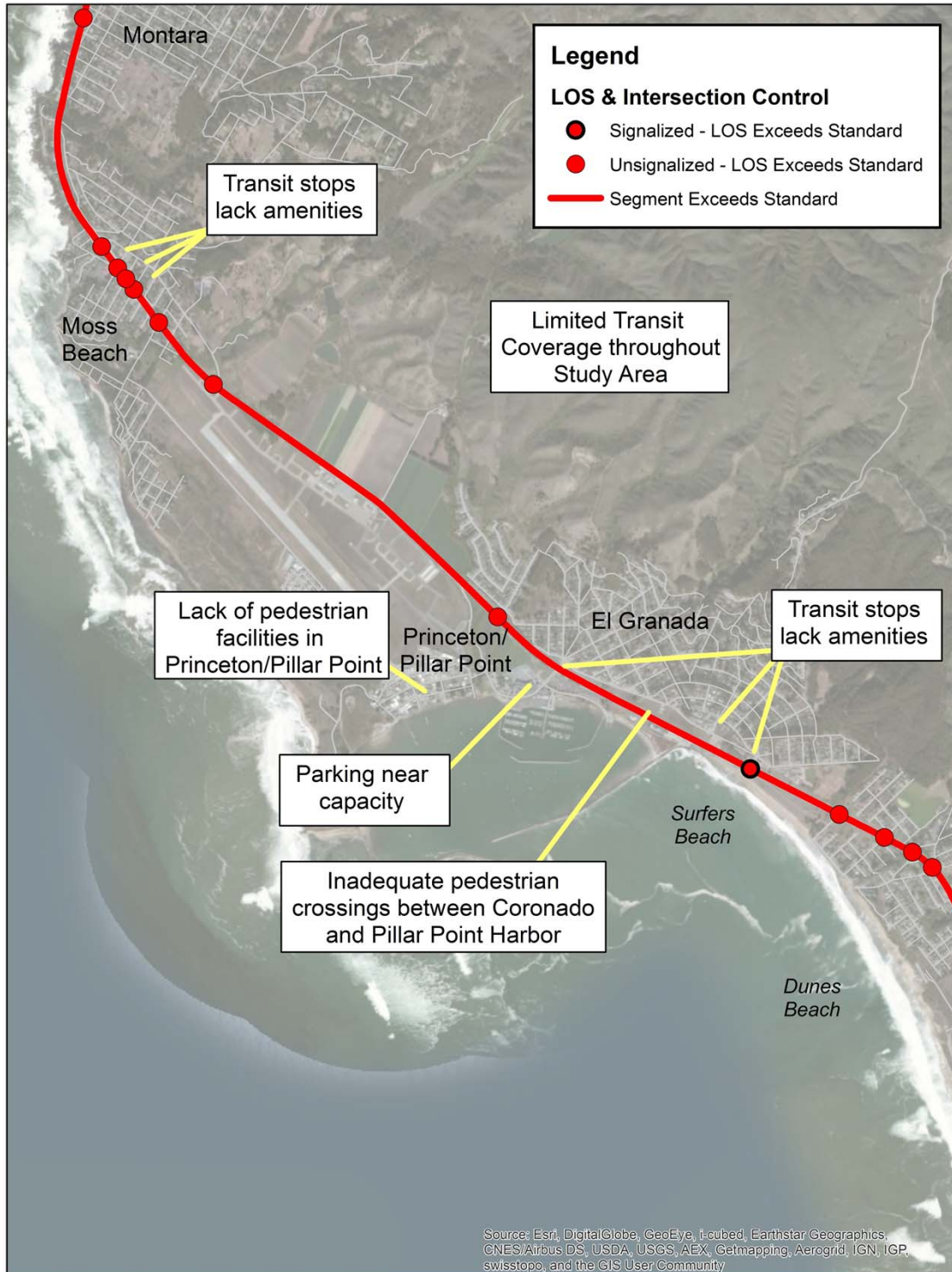


	Existing	Buildout
Household (% growth)	8,344	12,631 (51%)
Jobs (% growth)	7,032	9,951 (42%)

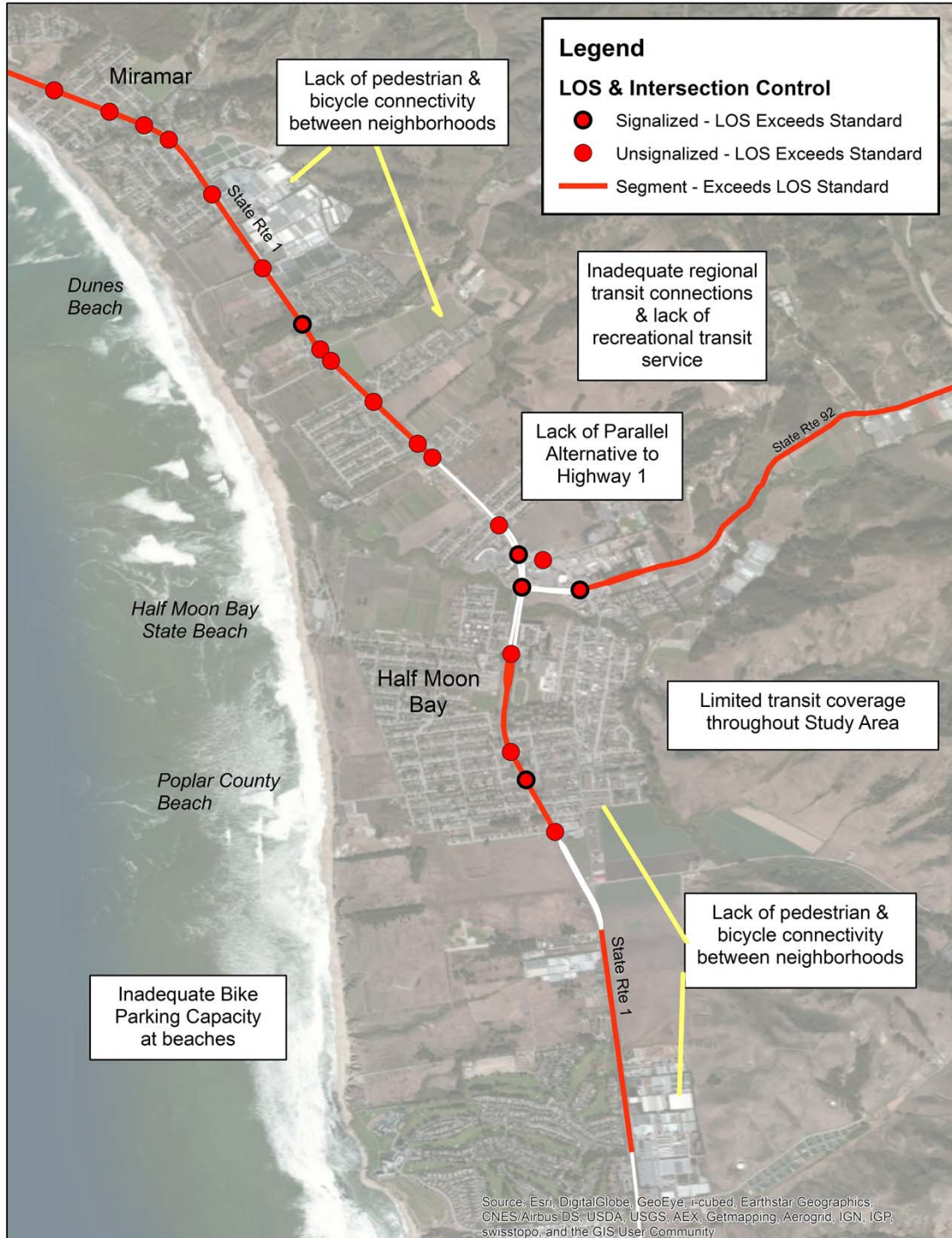
Buildout Transportation Issues – Montara and Moss Beach



Buildout Transportation Issues – El Granada and Miramar

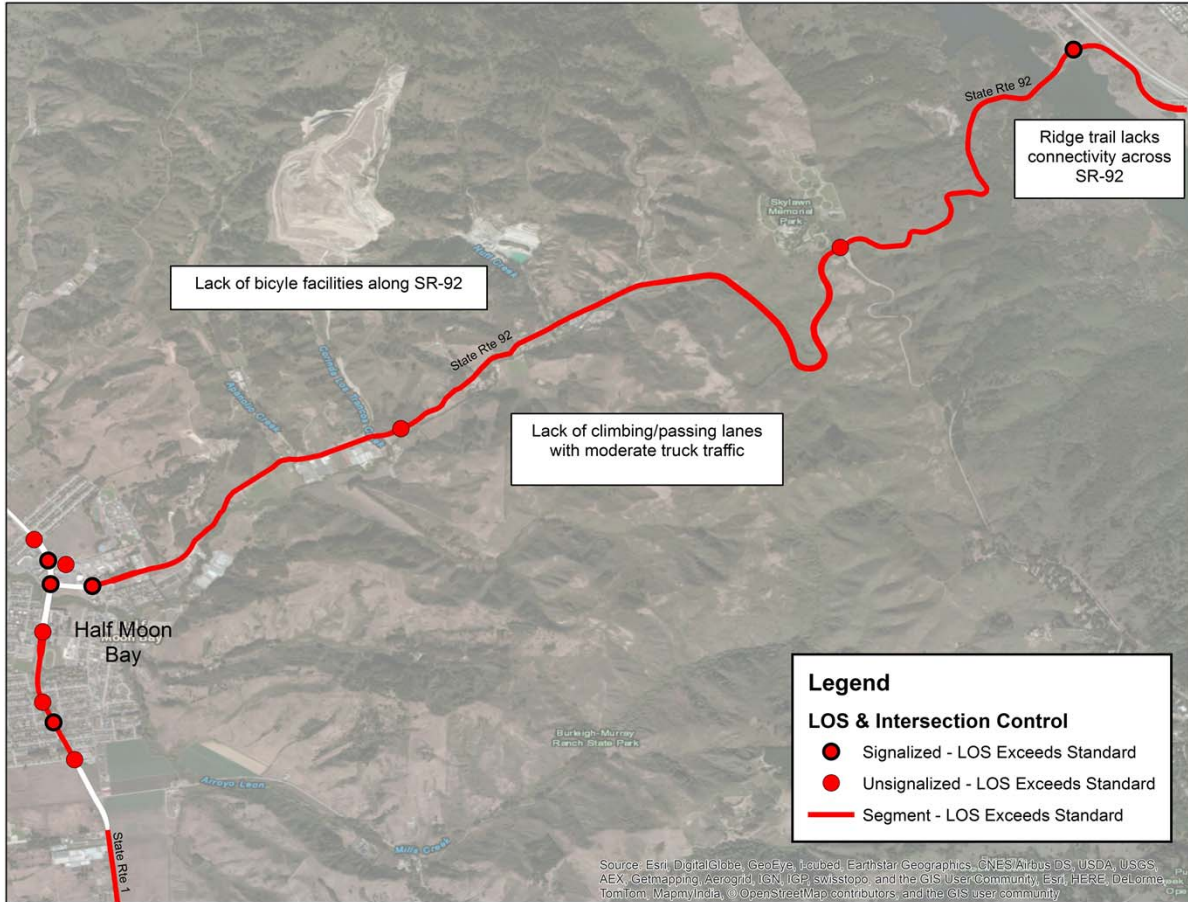


Buildout Transportation Issues – Half Moon Bay





Buildout Transportation Issues – SR 92 East of Half Moon Bay



Potential Solution Options

Pedestrian and Bicycle

- Illuminated pedestrian crossings
- Connect existing sidewalks and remove obstacles
- Extension of multiuse along Highway 1
- Addition of bike lanes on Hwy 1 and SR 92

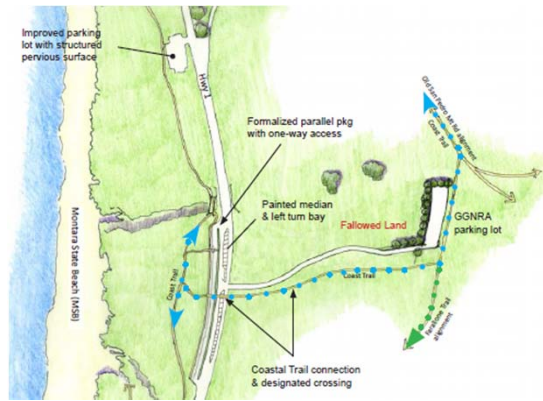
Transit

- Increase bus frequency
- Improved shelters
- Shuttles connections to BART and Caltrain
- Shuttles for special events

Gray Whale Cove



Montara Beach and Trail Access



Montara



Moss Beach



Half Moon Bay



El Granada

