

CAL FIRE NEWS RELEASE

California Department of Forestry and Fire Protection



CONTACT: Public Information Officer
(650) 477-0379

RELEASE DATE: June 28, 2023

CAL FIRE CZU to Conduct Prescribed Fire on San Francisco Public Utilities Commission's Peninsula Watershed Lands

BELMONT - On Friday, June 30, 2023, weather-permitting, CAL FIRE CZU will conduct two prescribed fires in San Mateo County in the State Responsibility Area (SRA). The first will take place on 5-acres of the face of San Andreas Dam. The second will occur on 20-acres of grassland at Filoli Historic House and Garden. Filoli Historic House and Garden will remain open during the operation.

Both prescribed fires will be completed in one day.

Smoke may be visible from Woodside, Belmont, Burlingame, Emerald Hills, San Carlos, Devonshire, San Bruno, and parts of I-280 in San Mateo County. There will be extensive fire equipment on scene. There is no need to call 911.

This project is part of a larger plan to conduct prescribed fire in the San Francisco Public Utilities Commission's (SFPUC) Peninsula Watershed. The San Andreas Dam burn unit is filled with grass. The SFPUC is obligated to keep it clear of vegetation for safety reasons.

This is our first prescribed fire at Filoli Historic House and Garden and will consume medusahead grass. CAL FIRE CZU Forester Sarah Collamer says, "Medusahead is a non-native grass that matures several weeks later than other annual grasses. If we burn it with a slow, hot fire after the seeds have ripened but before they drop, we can help control the population."

The SFPUC Peninsula Watershed is approximately 23,000 acres of land that collects drinking water in three reservoirs. The reservoirs serve about one million people in San Francisco and northern San Mateo County. The Peninsula Watershed supports many rare, threatened, and endangered species and is managed to protect drinking water quality and to protect and restore native ecological resources.

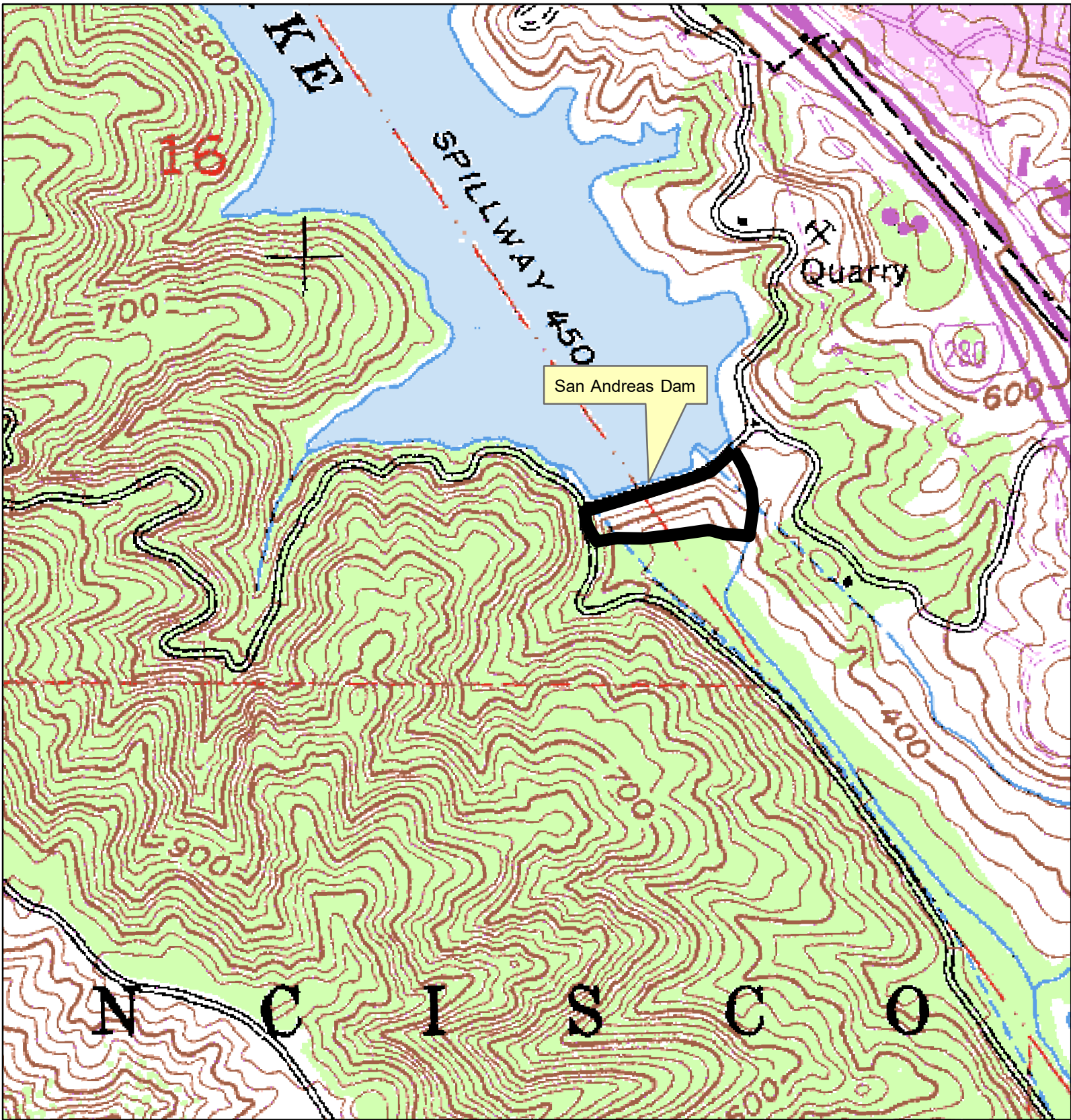
“The Peninsula Watershed is an important and unique open space in the San Francisco Bay Area and valued by our neighboring communities. We appreciate CAL FIRE’s efforts to reintroduce prescribed fire as a vegetation management tool to reduce wildfire risk and support native species” adds Lisa Wayne, SFPUC Watershed Resources Manager.

This prescribed fire was planned as part of broader strategic efforts to protect the local community and nearby natural resources. These plans are informed by community and local stakeholder input and serve as a collaborative effort with a range of cooperators throughout the course of the project. This project adds to significant work underway throughout the state and brings California one step closer towards meeting or exceeding state fuels reduction goals directed by the California Fire Plan and the [California Wildfire and Forest Resilience Action Plan](#).

To track the progress being made, both in your community and throughout California, please visit the CAL FIRE fuels reduction dashboard at <https://www.fire.ca.gov/what-we-do/natural-resource-management/fuels-reduction> and help share important preventing and preparedness information with your neighbors at readyforwildfire.org.

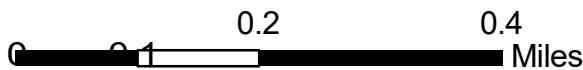


SFPUC Dam Burn Locations




(Page 3 of 4)

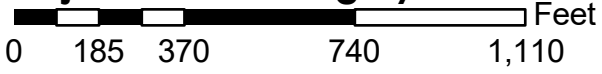
 Dam Burn





 Project Boundary

Project Area - Imagery



Filoli Fields Grassland Restoration Project

(Page 4 of 4)

10/28/2021

