



**Realignment Update  
Post-Release Community Supervision (PRCS)  
December 7, 2011**

***Introduction***

The following information is an update on the post-release community clients in Probation. The information reflects data from 10/01/2011 through 11/29/2011. In some places, data is included through 12/06/2011. Please note that the PRCS data is fluid and changes in client status can and do occur daily.

***PRCS Population***

October

In October, the Department received 48 packets, of which 33 were assigned to an officer and 15 were not accepted. Of the packets not accepted:

- 8 out of county
- 2 transferred to another county
- 3 were not eligible for PRCS and sent to County of San Mateo by mistake from CDCR
- 1 was reassessed by CDCR and deemed to be too high risk for release to PRCS
- 1 was sent to parole

November

In November, the Department received 39 packets, of which 31 were assigned to an officer and 8 were not accepted. Of the packets not accepted:

- 6 out of county
- 1 transferred
- 1 not eligible for PRCS due to CDCR risk score

Of the 39 packets assigned to an officer, 2 clients have US Marshall holds on them and will likely have a change in PRCS status.

December

For December, the Department has received 38 packets, of which 29 have been assigned to an officer. As of 11/29/2011, the following information is known about the packets:

- 2 were not accepted for out of county status, and
- 7 are pending review by the manager.
- Of the 29 clients assigned thus far to an officer, 8 clients will likely have a change in PRCS status for the following reasons:
- 3 have ICE holds;
- 1 has a warrant/hold from a city within SMCO;

- 2 have warrants/holds from other Bay Area counties; and
- 1 has warrant/hold from out of state

Of the packets under review, 1 individual has an ICE hold and 1 individual has a warrant/hold from another Bay Area county.

January

For January, the Department has received 32 packets (though this number could increase). To date, 6 packets have been assigned to an officer and 26 packets are under review. As of 11/29/2011, the review of January packets reveals that 1 individual likely will be transferred out of state and 3 individuals have warrants/holds on them from Bay Area counties, 1 of whom also has an ICE hold.

MONTH	PROJECTED*	RECEIVED	ASSIGNED	REJECTED	PENDING REVIEW
Oct 2011	31	48	33	15	0
Nov 2011	48	39	31	8	0
Dec2011	23	38	29	2	7
<b>Total 2011</b>	<b>102</b>	<b>125</b>	<b>93</b>	<b>25</b>	<b>7</b>
Jan2012	23	32	6	--	26
Feb012	10	14	2	--	12
Mar 2012	22	3	--	--	3
Apr 2012	25	2	2	--	--
May 2012	21	1	--	--	1
June 2012	24	--	--	--	--
July 2012	24	--	--	--	--
Aug 2012	21	--	--	--	--
Sept 2012	14	--	--	--	--
Oct 2012	17	--	--	--	--
Nov 2012	16	--	--	--	--
Dec 2012	15	--	--	--	--
<b>Total 2012</b>	<b>232</b>	<b>52</b>	<b>10</b>	<b>0</b>	<b>42</b>
Jan 2013	16	--	--	--	--
Feb 2013	7	--	--	--	--
Mar 2013	11	--	--	--	--
Apr 2013	10	--	--	--	--
May 2013	16	--	--	--	--
June 2013	12	--	--	--	--
July 2013	7	--	--	--	--
Aug 2013	8	--	--	--	--
Sept 2013	11	--	--	--	--
<b>Total 2013</b>	<b>98</b>	<b>--</b>	<b>--</b>	<b>--</b>	<b>--</b>
<b>TOTALS</b>	<b>432</b>	<b>177</b>	<b>103</b>	<b>25</b>	<b>49</b>

\* Source: CDCR

Data current as of 11/29/2011

Note: 10 packets received from CDCR since 11/29/2011

The evaluation process of potential PRCS client packets can be time consuming, as officers must verify client residence information as well as any outstanding warrants and holds. In addition, officers might discover other criteria that eliminate potential PRCS clients from coming to San Mateo County. The most common findings officers identify for not accepting a PRCS packet are illustrated in the following table:

<b>Common Reasons Packets Not Accepted or Potential Change in Status</b>	
<b>Residence Related</b>	
Out of county	16
Transferred	3
Pending transfer request	3
<b>CDCR Related</b>	
Not eligible for PRCS	3
Reassessed and denied PRCS	2
<b>Warrants/Holds</b>	
Out-of-state warrants	1
Bay Area warrants	7
In-county warrants	1
ICE holds/deportations	7
U.S. Marshall holds	2

As of 11/29/2011

*Transfer Requests*

To date, 3 PRCS clients (2 Daly City and 1 EPA) assigned to SMCO have requested to be transferred out of county. These requests are being evaluated and processed accordingly.

**Distribution of PRCS Clients in San Mateo County**

As of 11/29/2011, 51 clients have been assigned and are active to the PRCS unit.

SAN MATEO COUNTY		
	Cities	Total
1	Atherton	0
2	Belmont	1
3	Brisbane	0
4	Burlingame	2
5	Colma	0
6	Daly City	5
7	East Palo Alto	7
8	Foster City	0
9	Hillsborough	0
10	Half Moon Bay	1
11	Menlo Park	1
	Midcoast Cities	0
12	<i>El Granada</i>	0
13	<i>Montara</i>	0
14	<i>Moss Beach</i>	0
15	Milbrae	2
16	Pacifica	1
17	Portola Valley	0
18	Redwood City *	14
19	San Bruno	0
20	San Carlos	0
21	San Mateo	3
22	South San Francisco	4
23	Woodside	0
24	Homeless/transient	8
26	Unincorporated	0
27	Out of county	2
	<b>Total</b>	<b>51</b>

\*Includes unincorporated areas

**Correctional Assessment and Intervention System (CAIS) (n=25)**

A total of 25 CAIS assessments have been completed and entered into the database as of 12/06/2011. Though the number of clients assessed is small, almost two-thirds (64%) of them have a moderate risk of re-offending and almost one-third (32%) of the clients exhibit a high risk of re-offending during their time on community supervision. Only one client assigned to the PRCS unit has been evaluated as low risk to re-offend.

High	8	32%
Moderate	16	64%
Low	1	4%
<i>Total</i>	<i>25</i>	<i>100%</i>

**Warrants (n=51)**

As of 11/29/2011, warrants have been issued for a total of 9 clients (18%, n= 51). All of the warrants were issued for failure to appear.

<b>Warrants</b>	
Issued	9
Served	7
Outstanding	2
<i>Total</i>	9

**Flash Incarceration (n=51)**

Officers have used flash incarceration as part of an overall matrix of graduated sanctions for post-release supervision. As of 11/29/2011, a total of 6 clients (12%) have served 41 days of flash incarceration in the county jail.

<b>Flash Incarceration</b>		
Increments	Number of Clients	Number of Days
3 Days	1	3
5 Days	2	10
9 Days	2	18
10 Days	1	10
<i>Total</i>	6	41

**New Offenses (n=51)**

To date, 3 PRCS clients (6%) have sustained new charges:

Possession of a controlled substance (felony) = 2

Criminal threats (felony) = 1

Cruelty/elder abuse (misdemeanor) = 1

**Conclusion**

The Probation Department continues to receive an average of 39 PRCS packets from CDCR per month. Approximately, 20 percent of packets received were rejected and the rest assigned to a Probation Officer for supervision. Of 51 clients assigned to a Deputy Probation Officer, the majority are concentrated in the southern part of the County with 41 percent living in two cities—Redwood City, including unincorporated areas (14 clients), and East Palo Alto (7 clients). An additional 18 percent live in the northern part of the county, Daly City (5 clients) and South San Francisco (4 clients). Another 16 percent are homeless and/or transient.

A total of 25 CAIS assessments have been completed to-date and the PRCS unit is ramping up in order to complete assessments in a more expeditious manner. A majority of clients assessed (64 percent) have been determined to be at moderate risk of re-offending and 32 percent are at high risk of reoffending. Only 4 percent (1 client) of the population has been determined to be at low risk.

## AB-109 Monthly–November 2011

### PC 1170(h): 14 inmates

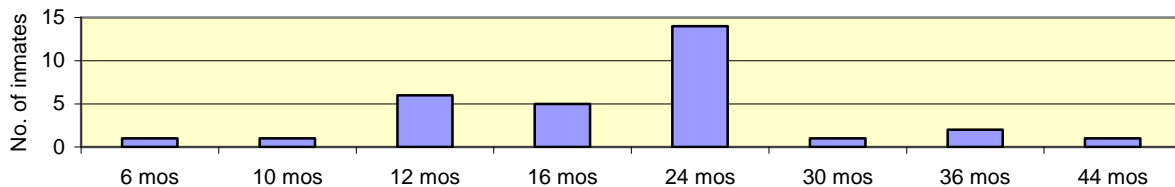
	Current Month (Nov 2011)	Prior Month (Oct 2011)	Total since Oct 2011
Number of sentenced cases	14	17	31
Total days to be served	3,734	2,435	6,169
Non-PC1170 total days to be served	6,015	6,131	12,046
Percent increase in sentenced days due to PC1170	62%	40%	51%

**14** inmates (11 men, 3 women) were sentenced to the County jail under PC 1170(h) during November. The average sentence imposed was 757 days or about 25 months. After credits, these inmates are expected to serve a total of **3,734** days, or on average 267 days each.

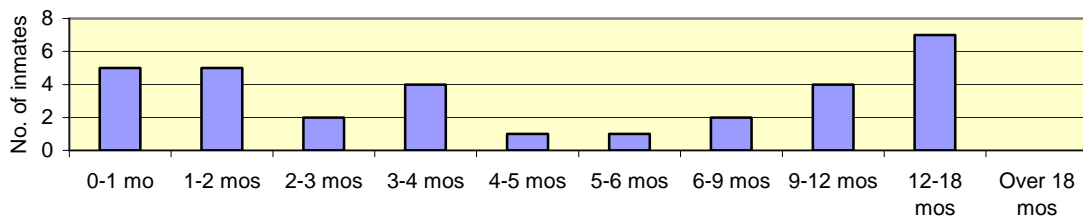
For comparison, 121 persons (102 men, 19 women) were sentenced to terms in the San Mateo County jail exclusive of the PC 1170(h) cases. The average sentence imposed was 141 days or about 5 months. After credits, these inmates are expected to serve a total of 6,015 days, or on average 50 days each.

Cumulatively, the 31 PC 1170(h) inmates sentenced October-November 2011 account for a 51% increase in the sentenced bed-days that must be planned for.

**PC1170(h) Length of Sentence Imposed, Oct-Nov 2011**



**PC1170(h) Actual time to be served, Oct-Nov 2011**



### Post-Release Community Supervision: 6 inmates

There were **6** PRCS cases active in November which totaled **57** days in custody.

### Parole Revocation: 53 inmates

There were **53** parole revocation cases resolved in November. These inmates are expected to serve a total of **2,186** revocation days in custody, or on average 41 days each.

In summary adding 3,734 jail bed day incurred for 1170(h), plus 57 days for PRCS, plus 2,186 days for 3056 revocations equals a total of **5,977 jail bed days** that would normally be charged to CDCR and will now incur a burden to the Sheriff.



# Service Connect:

A project of the San Mateo County Human Services Agency and Health System

## San Mateo County Health System Post-Release Community Supervision Client Update October 1, 2011 to December 7, 2011

# of Client Information Sheets (CIS) received from Probation Department	91	Only includes verified PRCS population, not locally-sentenced population
Health Need	CDCR estimated need	# of clients previously known to Health System
Alcohol & Other Drug needs	58	22**
Mental Health needs	6	45**
Medical needs	12	36**

Total Post Release Supervision Clients Seen by Health System Staff	32	This does not include locally sentenced population, which has been seen
AOD Services	Number	Note
AOD assessments* completed	16	Policy is to assess all clients
# of clients indicated for treatment	16	
Additional AOD assessments* scheduled	3	
# of clients in treatment	3	
Additional # of clients referred to treatment	3	Pending acceptance
Mental Health Services	Number	Note
Mental Health screenings* completed	12	Policy is to screen all clients
Mental Health assessments completed	8	
Mental Health Treatment Indicated	4	1 additional pending referral
Medical Services	Number	Note
# of clients with Medical condition(s)	22	All clients are given a health screening

\*Validated assessment instrument used is the Addiction Severity Index and for Mental Health Screen is the AC-OK.

\*\*Our databases are periodically cross-referenced for service history, but since CIS are continuously received, there is a lag in data updates.

DRAFT: 12/7/2011

Note: Data collection procedures are still being worked out. Please send questions to:  
Crispin Delgado, cdelgado@smcgov.org



# Service Connect:

A project of the San Mateo County Human Services Agency and Health System

Community Corrections Partnership  
(2011-12-07)  
Day of Handout

San Mateo County Human Services Agency  
Reporting Period – October 1 – December 2, 2011 \*\*

Factor	Number	Note
Total "Post Release Client"/Parolees seen to date	<b>35</b>	
<b>Immediate Need</b>		
In need of temporary housing (Hotel/Motel)	13	13 placed in hotel
Long Term Housing Solution		83 total number of days of hotel 2 referrals to Shelter Network/Maple St.
Transportation Assistance (Bus Pass or One-Way Ticket)	15	3 with one way tickets, totaling 15 tickets
\$20 Savers Clothing Voucher	14	
\$25 Safeway Gift Card	33	
\$10 Phone Card	10	
\$25 Gas Card	5	Will provide at a future appointment
<b>Eligibility Services</b>		
Economic Self Sufficiency Program Appointments	26	
<b>Emergency Food Stamps</b>		
Pending	2	Approved 15 Denied 4
		Not Requesting and/or N/A 9
<b>Food Stamps</b>		
Pending	4	Approved 12 Denied 6
		Not Requesting and/or N/A 9
<b>General Assistance</b>		
Pending	5	Approved 7 Denied 4 Disc'd 1
		Not Requesting and/or N/A 13
<b>Medi-Cal</b>		
Pending	0	Approved 3 Denied 15
		ACE/MCE Referral 14
<b>CalWORKs</b>		
Pending	0	Approved 1 Denied 0 Ineligible 25
		Not Requesting and/or N/A
<b>SSI – Working with DSA</b>		
Pending	2	Approved 1 Denied
		Applied by them self 3
<b>Case Planning Long Term Supportive Services Interest</b>		
Economic Self Sufficiency Program Assistance		
GED Educational Services	7	
Vocational Training Services	10	
Employment Job placement services	14	
Career Interest Assessment	3	
Educational Assessment	2	
Community Mentor	13	
Support Groups	4	
Supportive Services (Miscellaneous financial assistance)	9	
Additional \$25 Safeway Gift Card	4	
Additional Month(s) of Bus Pass	5	
Additional Gas Card	0	
Requesting long term housing assistance	6	Non Treatment Housing
<b>Other Characteristics</b>		
SSI Application Pending	6	